

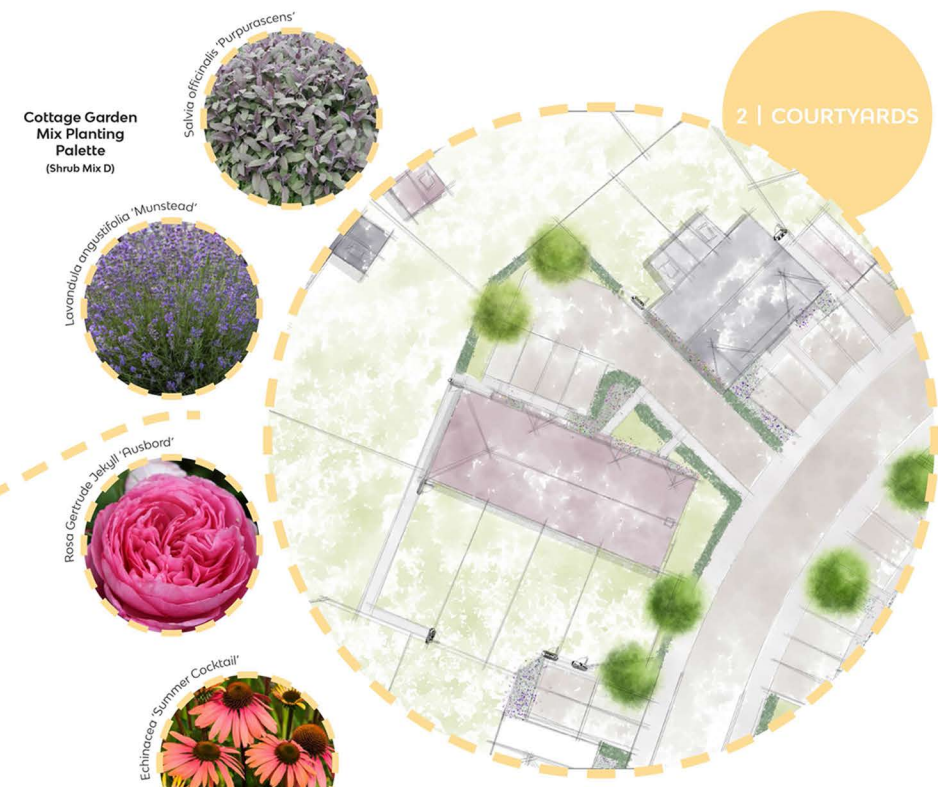
ECOLOGY & TREES



1 | STREET SCENE

Planting
New trees have been planted where space allows, focussing native stock to open spaces and ornamental species within the development area. New woodland blocks are proposed adjacent to the existing woodland within a carpet of understorey shrub planting on the proposed bunds. Tree planting within the central open space has been designed to ensure an 'open' quality is retained within the space, promoting movement westwards within the scheme towards the retained woodland (designed as a SANG).

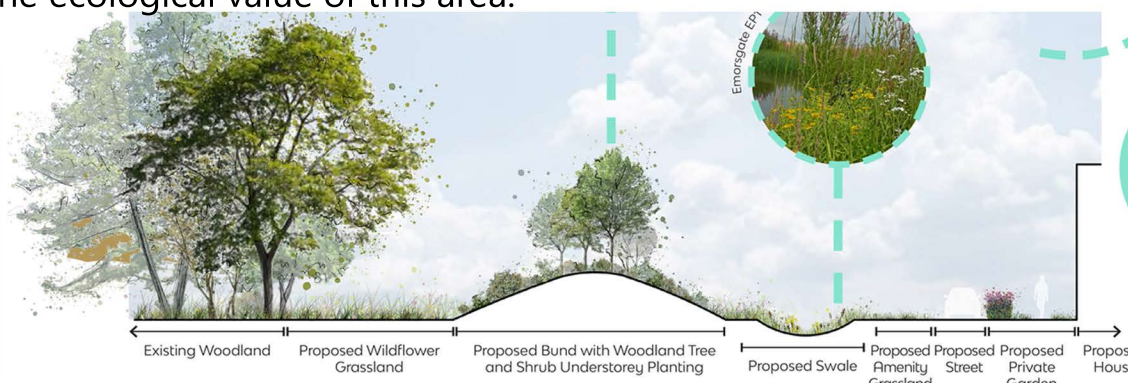
These are designed to provide a soft interface, a sense of separation and act as a transition between the 'built' and 'undeveloped' elements of the site. The species selected for these areas have been designed to provide foraging opportunities and nectar sources for wildlife alongside meadow grassland to enhance the ecological value of this area.



2 | COURTYARDS



3 | FLATS AND FOGS



4 | OPEN SPACE

